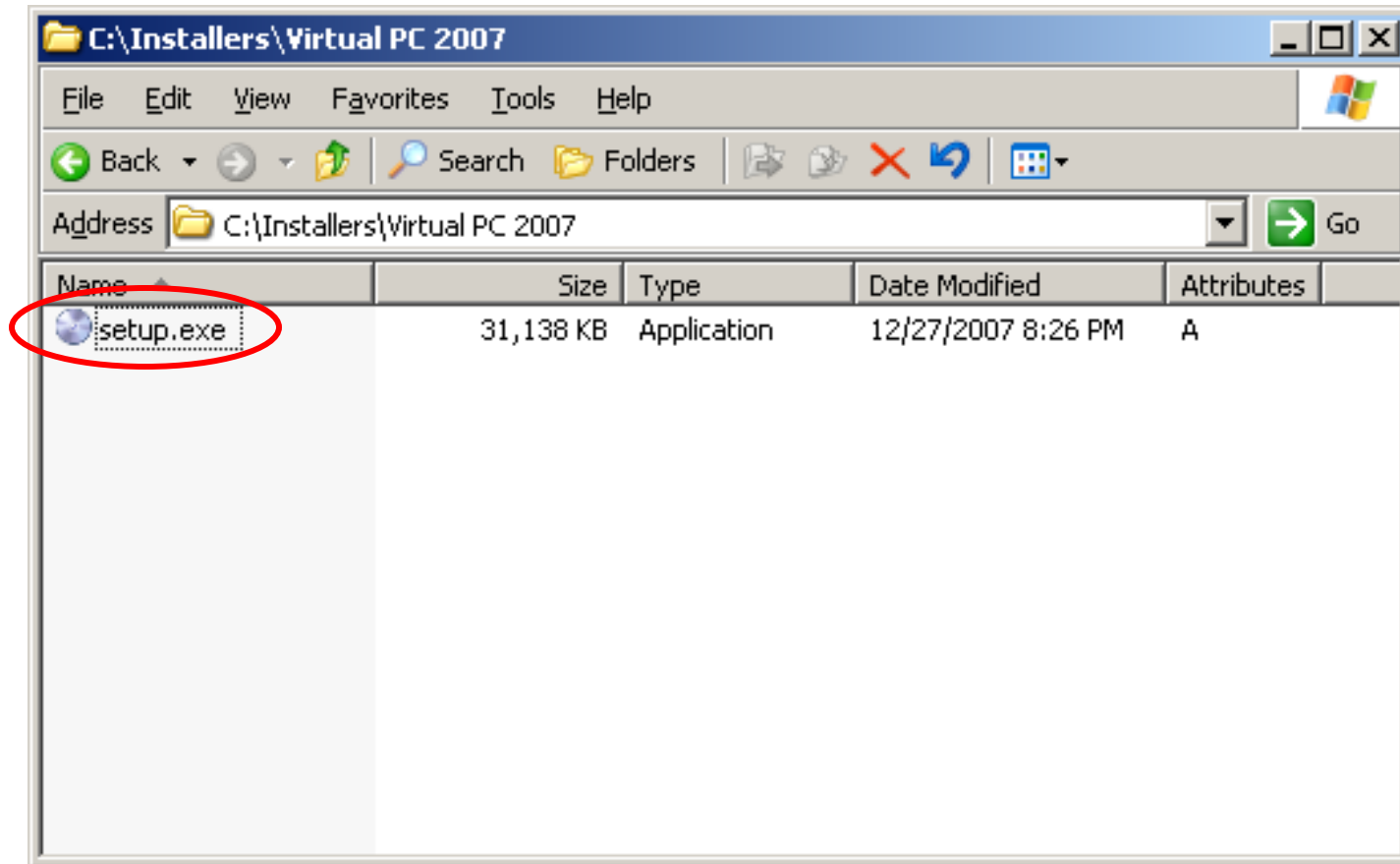


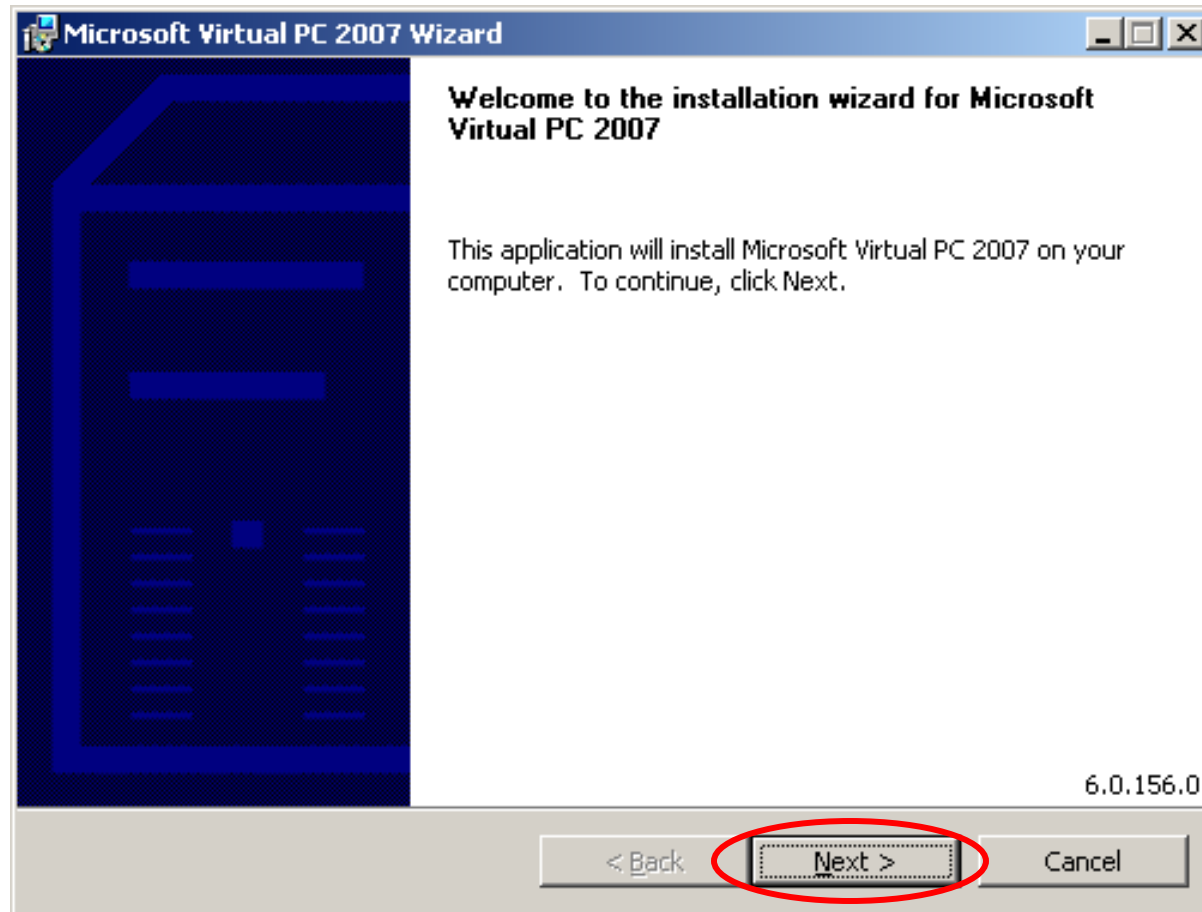


HOW TO Install Microsoft Virtual PC 2007

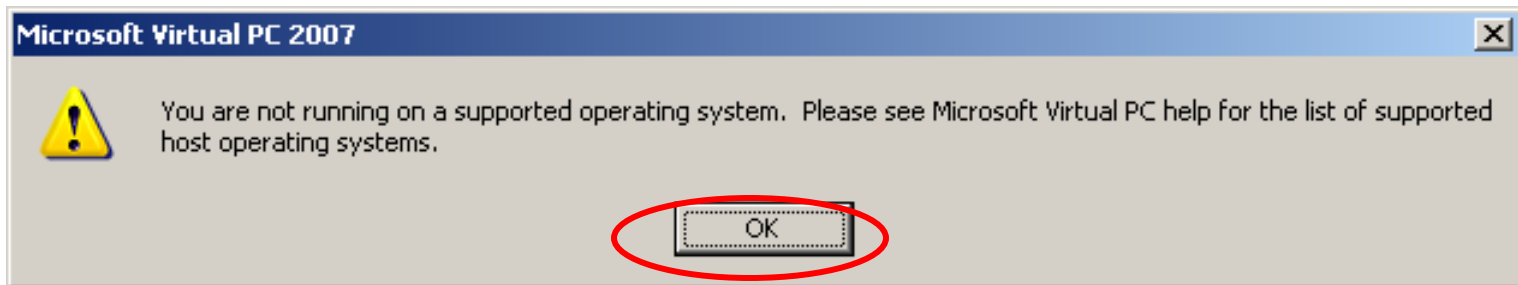
- Double click setup.exe



- Click **Next** to begin the installation



- Virtual PC 2007 runs on
 - Windows XP Professional
 - Windows XP Tablet PC
 - Windows Server 2003
 - Windows Vista Business
 - Windows Vista Enterprise
 - Windows Vista Ultimate



- Accept terms of agreement



- Fill in User Name and Organization

Microsoft Virtual PC 2007 Wizard

Customer Information

Please enter your information.

Username:
Sam Student

Organization:
Home

Product Key:
PWCVD - GDPM7 - P23VY - G6QM4 - R8Y8T

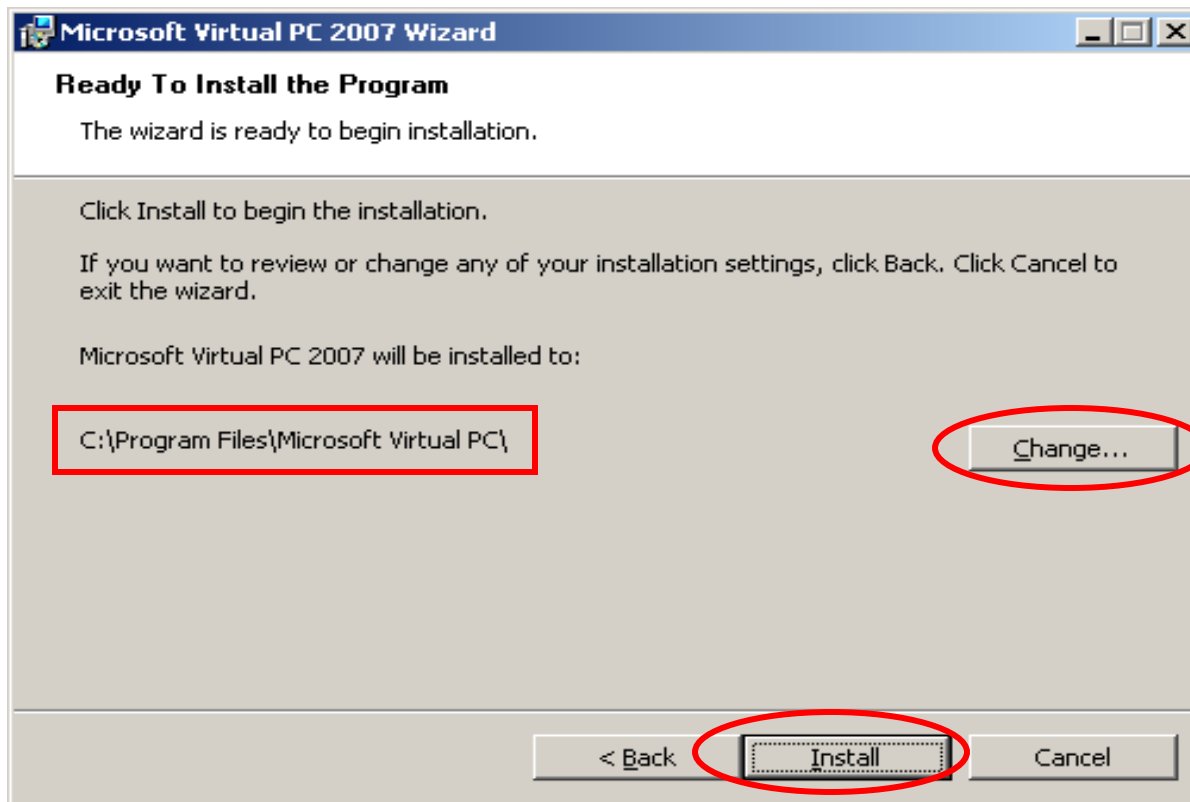
Install this application for:

Anyone who uses this computer (All Users)

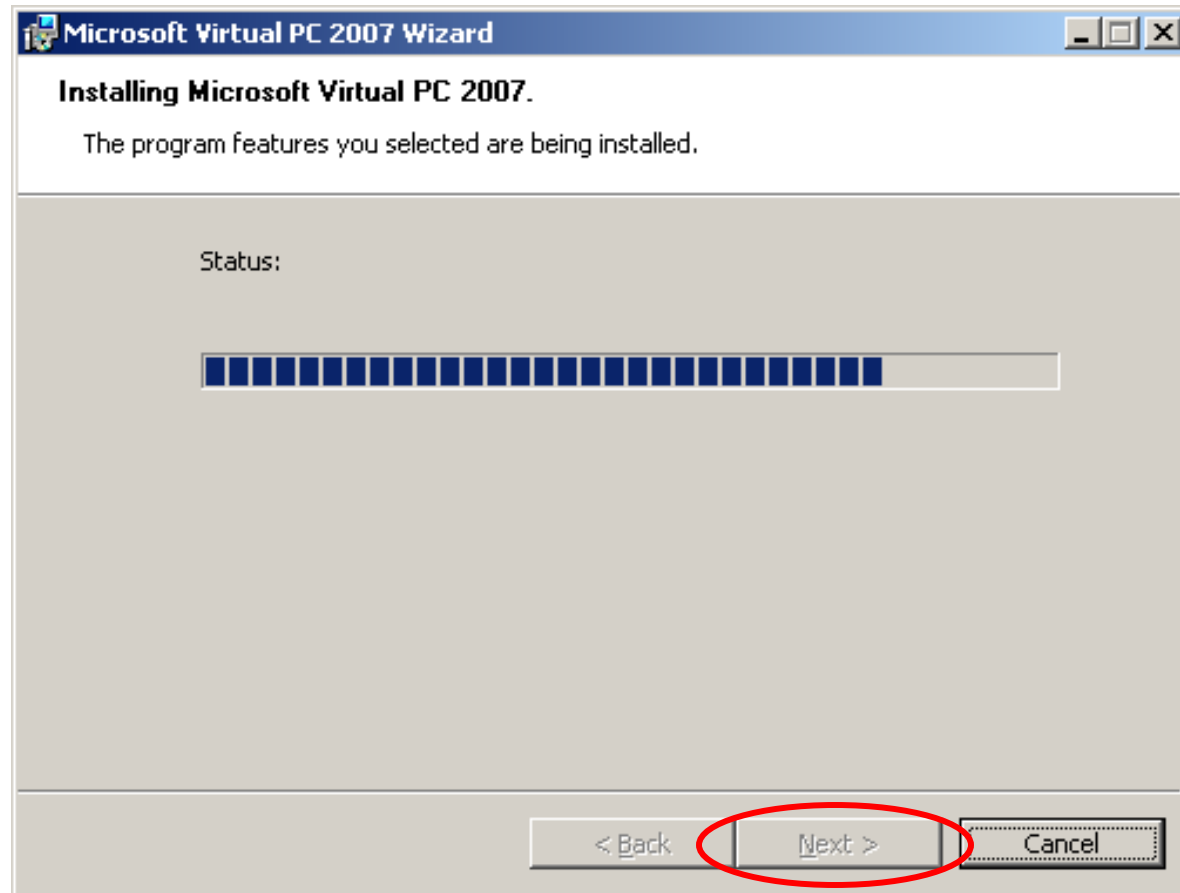
Only for me (Master)

< Back **Next >** Cancel

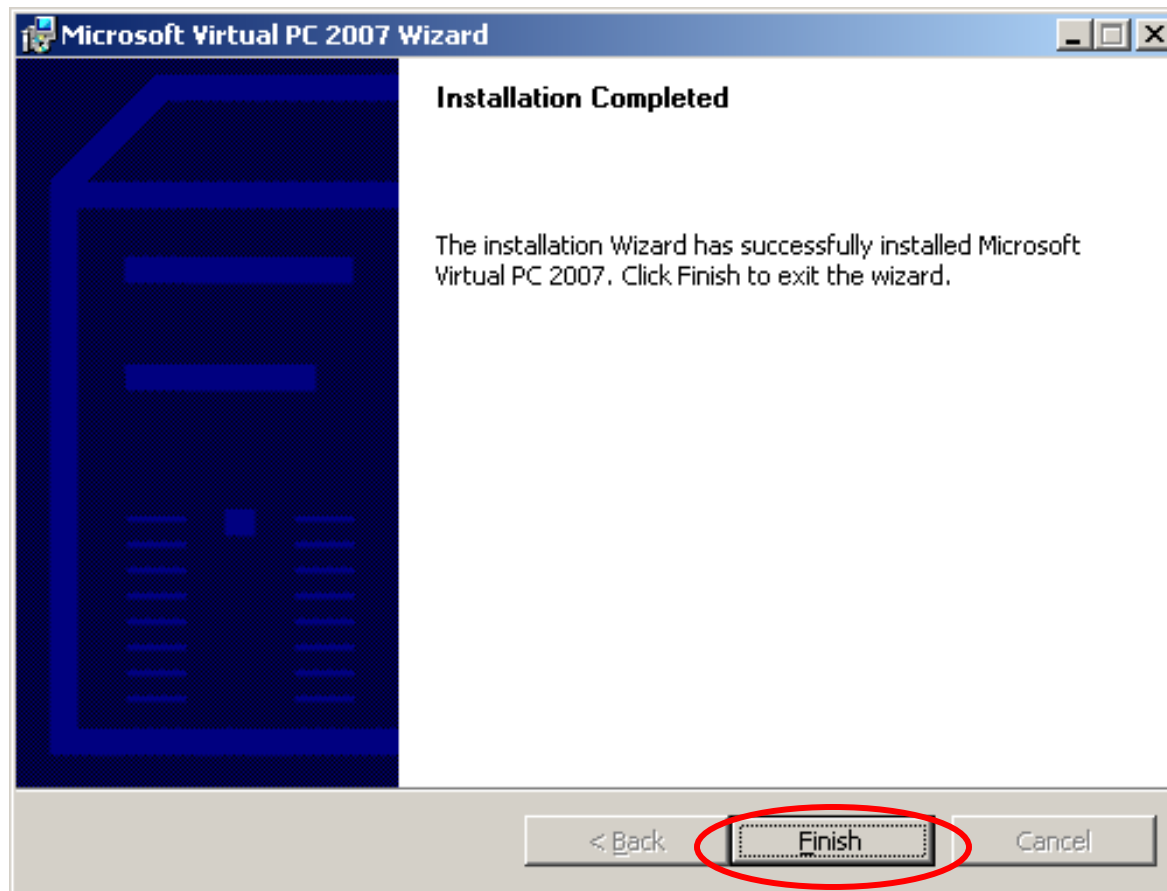
- Select location for installation



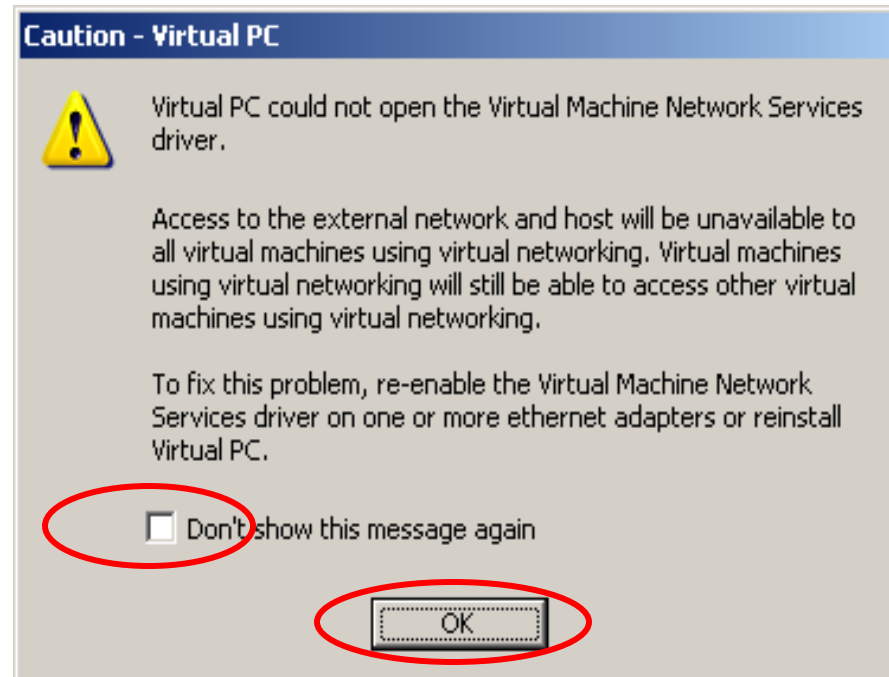
- Next button will not be grayed out when process completes



- Click **Finish** to complete the installation

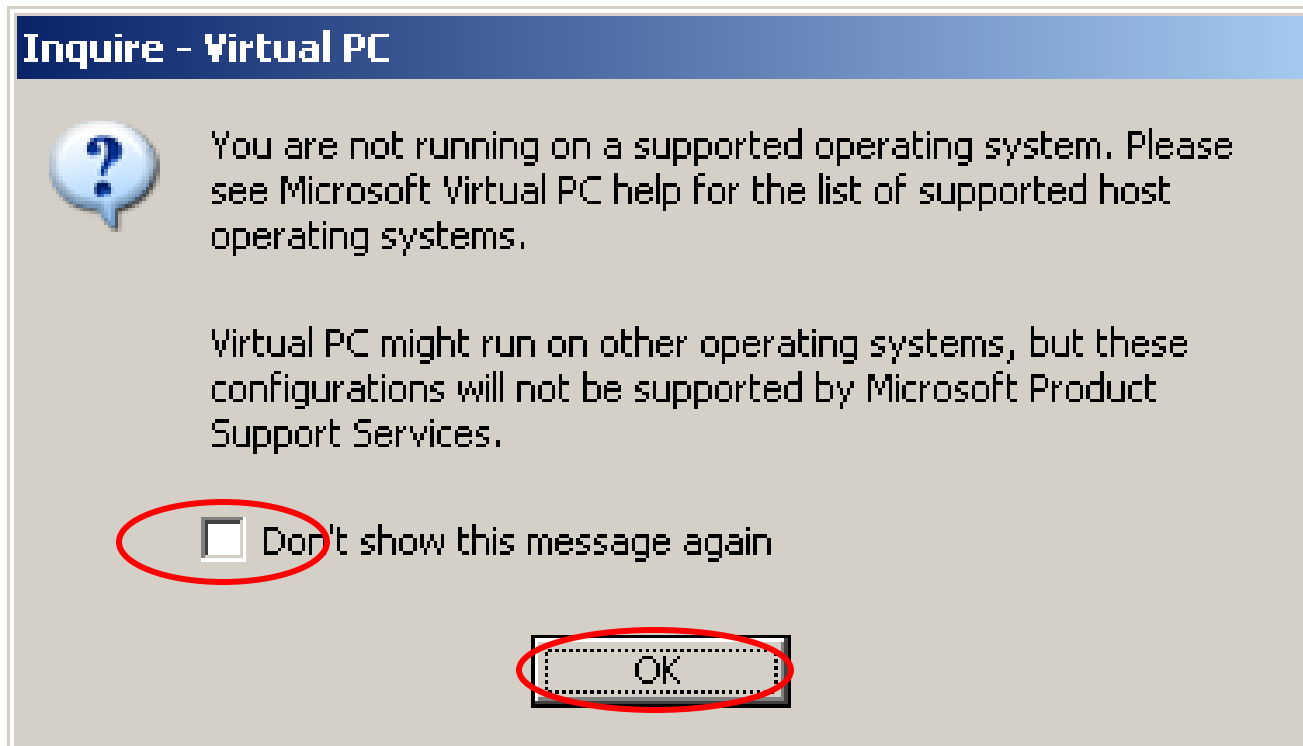



- Start Virtual PC - This window could be displayed.



- Putting your lab machines on a live network is not recommended.

- You could get this message also during installation.





You are now ready to
set up labs !!!